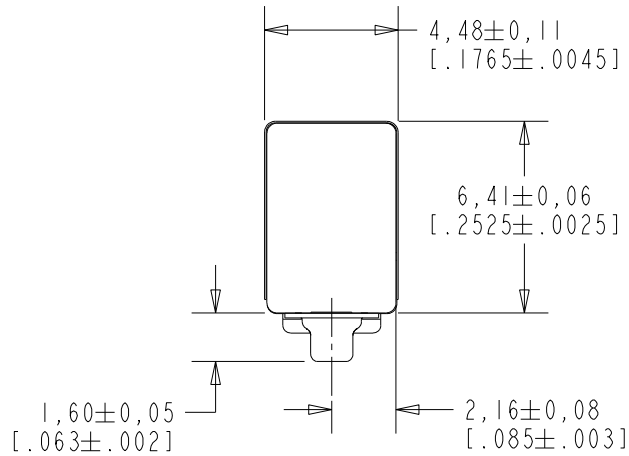


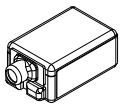
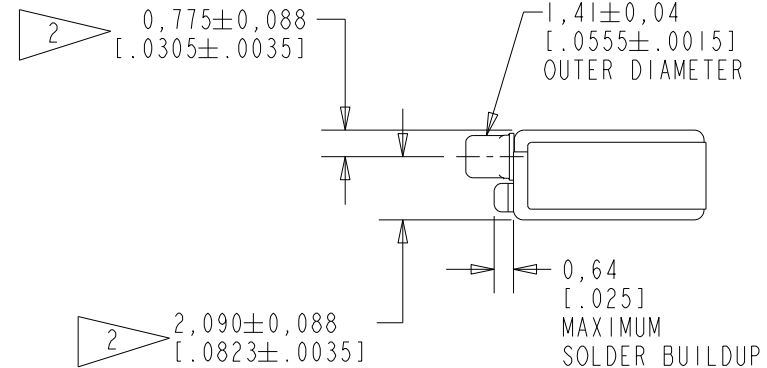
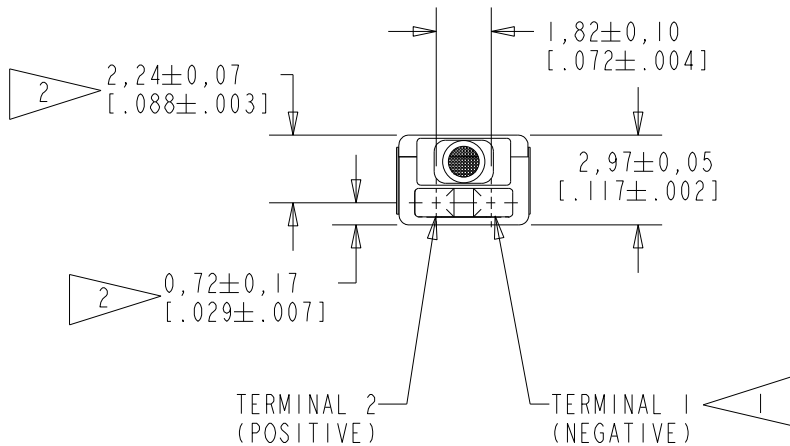
ED-26846-000

SHT 1.1



NOTE:

- 1 A POSITIVE GOING VOLTAGE AT TERMINAL 2, RELATIVE TO TERMINAL 1, CAUSES A DECREASE IN PRESSURE AT THE SOUND OUTLET.
- 2 LOCATED FROM TWO SURFACES FOR CUSTOMER CONVENIENCE. ONLY APPLICABLE FROM ONE SURFACE, NOT TO BE USED TOGETHER. HORIZONTAL LOCATION FOR TERMINAL CENTERED TO $\pm 0,07$ [0.007].



SCALE 2:1

NOMINAL WEIGHT
.31 GRAM

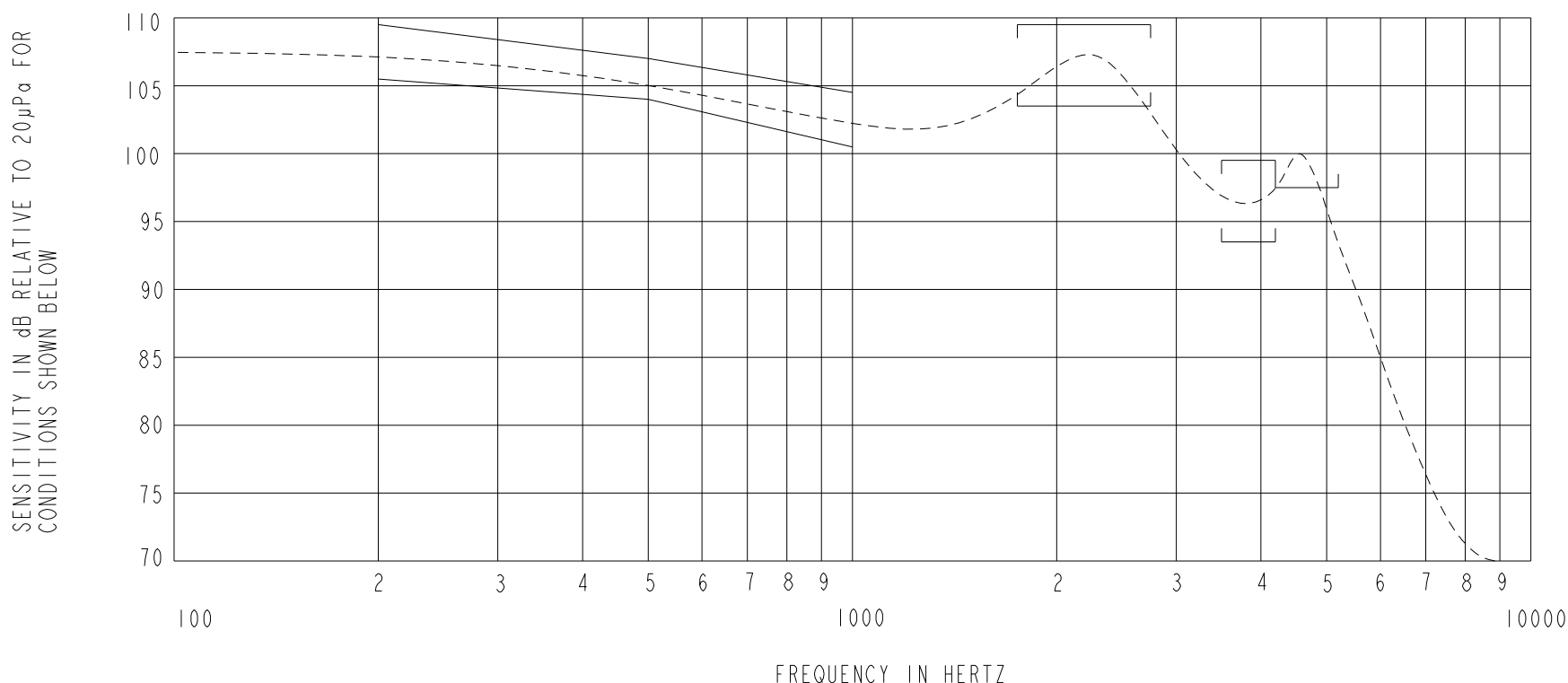
DIMENSIONS IN MILLIMETERS [INCHES]

Revision	C.O. #	Implementation Date	RELEASE LEVEL	REVISION
C	PI0000647	6-30-16	Active	C
B	CI0104697	9-11-06		
A	CI0103743	1-23-06		

SCALE: 4:1		DR. BY	DATE
DO NOT SCALE DRAWING		CRG	1-23-06
TITLE: RECEIVER		CK. BY	DATE
OUTLINE DRAWING		GJP	1-25-06
ED-26846-000		APP. BY	DATE
SHT 1.1		GJP	1-25-06

KNOWLES CORPORATION

CONSTANT VOLTAGE DRIVE CONDITIONS



ACOUSTICAL

SENSITIVITY

DEVICE WILL PRODUCE THE SPL LISTED BELOW UNDER TEST CONDITIONS DESCRIBED IN TABLE 3. NOMINAL SENSITIVITY AT 1kHz IS dB RELATIVE TO 20µPa. ALL OTHER VALUES IN dB RELATIVE TO THE SENSITIVITY AT 1kHz.

FREQUENCY (Hz)	MINIMUM	NOMINAL	MAXIMUM
200	+3.0	+5.0	+7.0
500	+1.5	+3.0	+4.5
1000	-2.0	102.5	+2.0
1750 - 2750 PEAK	+1.0	+4.0	+7.0
3500 - 4200 VALLEY	-9.0	-6.0	-3.0
4200 - 5200 PEAK	-5.0	---	---

PORT LOCATION: 6C
TERMINAL LOCATION: 6B

TABLE 1

TOTAL HARMONIC DISTORTION

DEVICE WILL NOT EXCEED TOTAL HARMONIC DISTORTION LEVELS LISTED BELOW.

FREQUENCY (Hz)	AC DRIVE (V rms)	DC BIAS (mA)	LIMIT (%)
500	0.612	0	5
780	0.153	0	5
1175	0.153	0	5

TABLE 2

TEST CONDITIONS

NOMINAL SOURCE VOLTAGE	0.153 V rms, 0mA DC BIAS
SOURCE IMPEDANCE	<0.35 Ohm
TUBING	10mm [.394"] LONG, 1mm [.039"] I.D.
COUPLER CAVITY	2 CM ³ , SIMULATED ANSI S3.7 TYPE HA-3 (IEC 60318-5)

TABLE 3

ELECTRICAL

DC RESISTANCE	35 OHMS ± 10%
IMPEDANCE @ 500 Hz	55 OHMS ± 15%
IMPEDANCE @ 1 kHz	90 OHMS ± 15%
IMPEDANCE @ 100 kHz	1250 OHMS MIN.
IMPEDANCE @ 200 kHz	1850 OHMS MIN.
IMPEDANCE @ 500 kHz	3100 OHMS MIN.
IMPEDANCE @ 1 MHz	5050 OHMS MIN.

TABLE 4

ISOLATION: CASE WILL BE ELECTRICALLY ISOLATED FROM THE COIL CIRCUIT.

Revision	C.O. #	Implementation Date	RELEASE LEVEL	REVISION
C	P10000647	6-30-16	Active	C
B	C10104697	9-11-06		
A	C10103743	1-23-06		

KNOWLES CORPORATION

WHEN TEST LIMITS ARE USED TO ESTABLISH INCOMING INSPECTION ACCEPTANCE/REJECTION CRITERIA, CORRELATION OF TEST EQUIPMENT WITH KNOWLES IS ALSO REQUIRED FOR ELIMINATION OF EQUIPMENT AND TEST METHOD VARIATION

TITLE: RECEIVER
PERFORMANCE SPECIFICATION

ED-26846-000
SHT 2.1

DR. BY	DATE
CRG	1-23-06
CK. BY	DATE
GJP	1-25-06
APP. BY	DATE
GJP	1-25-06